

A place where parents play a part from the start!

Program Offerings

MCNS is licensed by the NYS Office of Children and Family Services and offer a half day or full day program for children. We also are chartered by the NYS Board of Regents as an educational facility.

For the 2024-2025 school year, we will be offering a variety of programs for young children. *To be eligible to enroll at MCNS, children must turn 20 months by December 31, 2024.*

Available Programs:

AM Only Program:

- **Two or Three Half Days:** This group will meet either two (TH/F) or three (M-W) mornings per week. *This option is for 2 year olds only*
- **Five Days:** This group will meet Monday- Friday morning.

PM Only Program:

- **Two or Three Half Days:** This group will meet either two (TH/F) or three (M-W) afternoons per week. *This option is for 2 and 3 year olds only*
- **Five Days:** This group will meet Monday- Friday afternoon.

Full Days: Only for children turning 2 by April 30, 2024

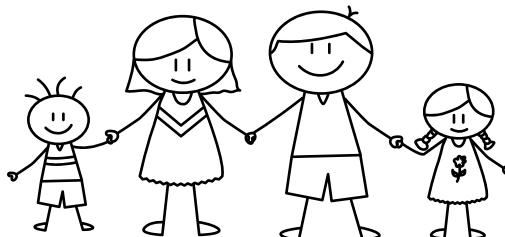
- **Five Full Days:** This group will meet Monday through Friday AM and PM.
- **Two Full Days and Three Half Days:** This group will meet Monday through Friday in the morning. The afternoon option is two afternoons per week Monday & Tuesday or Thursday & Friday.
- **Three Full Days and Two Half Days:** This group will meet Monday through Friday in the morning. The afternoon option is three sessions per week Monday, Tuesday & Wednesday or Wednesday, Thursday & Friday.

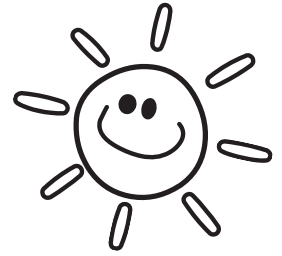
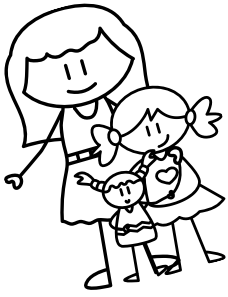
Program Times:

Morning: 8:45 to 11:45 AM **Afternoon:** 12:15 to 2:45 PM **Full day:** 8:45 AM to 2:45 PM

Parent Participation:

The option for a parent to participate in the classroom once a month is for our 3, 4 & 5 year olds only.





Program Choices and Tuition Rates 2024-2025 School Year

PROGRAMS: <i>Children must turn 2 by April 30, 2024 to be eligible for full days</i>		Tuition	Participating Tuition <i>3, 4 & 5 year olds only</i>
5 Full Days	8:45 AM to 2:45 PM	\$17,485.00	\$16,985.00
3 Full Days and 2 Half Days	8:45 AM to 2:45 PM and 8:45 AM to 11:45 PM Full days are M/Tu/W or W/TH/F	\$14,975.00	\$14,475.00
2 Full Days and 3 Half Days	8:45 AM to 2:45 PM and 8:45 AM to 11:45 PM Full days are M/Tu or TH/F	\$13,185.00	\$12,685.00
5 Half Days AM	8:45 AM to 11:45 AM (3 hours)	\$9,995.00	\$9,495.00
5 Half Days PM	12:15 PM to 2:45 PM (2 ½ hours)	\$8,100.00	\$7,600.00
3 Half Days AM <i>2 year olds only</i>	8:45 AM to 11:45 AM (3 hours) M-W	\$7,100.00	\$6,600.00
3 Half Days PM <i>2 & 3 year olds only</i>	12:15 PM to 2:45 PM (2 ½ hours) M-W	\$6,025.00	\$5,525.00
2 Half Days AM <i>2 year olds only</i>	8:45 AM to 11:45 AM (3 hours) TH/F	\$4,950.00	\$4,450.00
2 Half Days PM <i>2 & 3 year olds only</i>	12:15 PM to 2:45 PM (2 ½ hours) TH/F	\$4,225.00	\$3,725.00

There is a 10% tuition reduction for a second or third child from the same family enrolled in the same program at the same time. All reductions are on the lowest tuition.

Class placement will be made at the Director's discretion according to your child's birthday along with teacher input.

